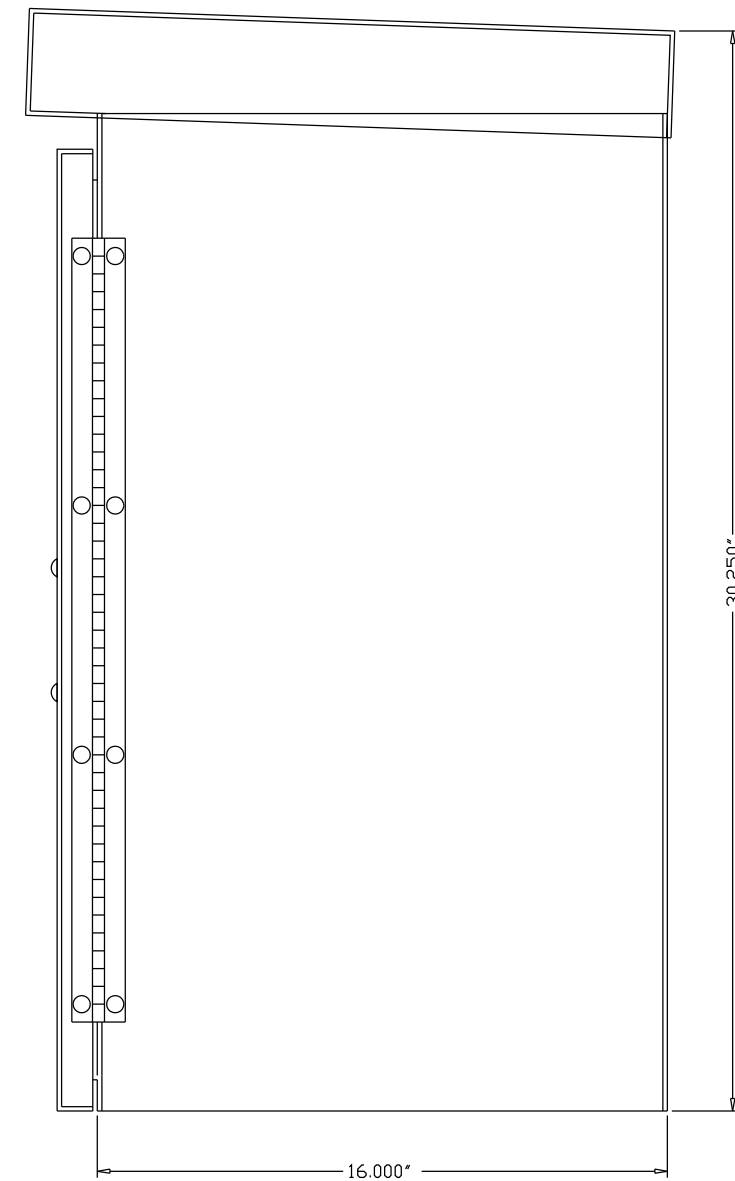
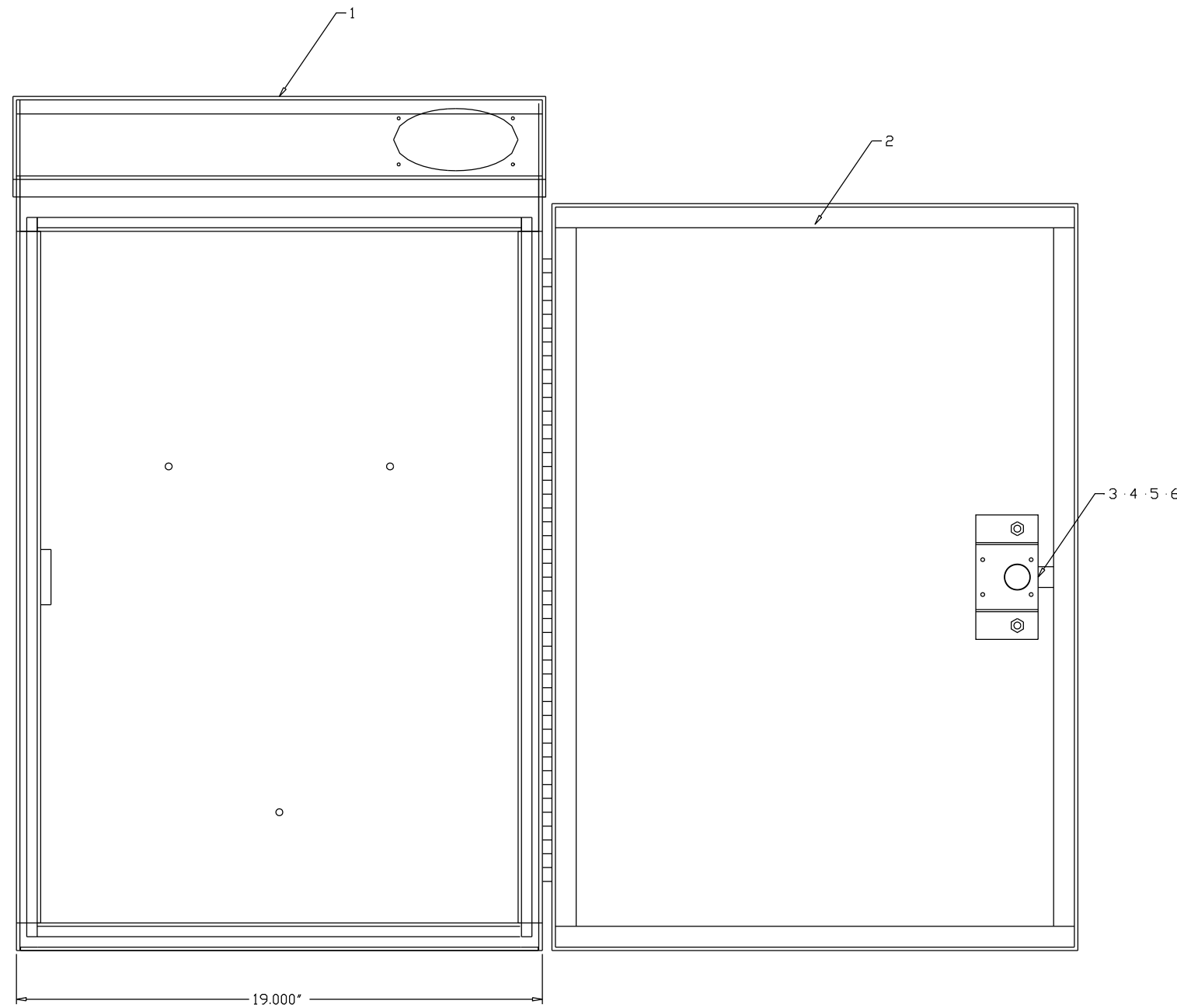


REVISIONS					
REV	ECN	DESCRIPTION	DRAFT	DATE	CHKD
1	6988	MANUFACTURING RELEASE	RTF	1/97	RTF



Qty.	Item	Part No.	Description
4	6	0157016	#8 LOCK WASHER
4	5	317151	#8 FLAT WASHER
4	4	0116815	8-32X1.25 RHMS
1	3	PAL03593P001	CORBIN LOCK W/BEVEL
8	2	PBG96	1/4X3/4 GASKET
1	1	EG-0324-0221	CABINET ASSEMBLY

PARTS LIST

NOTE(S):
 1. RECOMBINATE LOCK TO CONNETICUT KEY #2.

THE INFORMATION CONTAINED HEREIN IS THE PROPRIETARY PROPERTY OF EAGLE TRAFFIC CONTROL SYSTEMS AND IS DISCLOSED WITH THE UNDERSTANDING IT WILL BE RETAINED IN CONFIDENCE AND WILL NEITHER BE DUPLICATED NOR COPIED IN WHOLE OR PART NOR BE USED FOR ANY PURPOSE OTHER THAN THAT FOR WHICH DISCLOSED.

EAGLE TRAFFIC CONTROL SYSTEMS					
QUALITY	MFG ENGR		DWG TITLE		
	DES ENGR RTF 1/97		CABINET KIT ASSEMBLY		
	CHECKED BY RTF 1/97				
	DRAWN RTF 1/97				
MATERIAL & FINISH	TOLERANCES UNLESS OTHERWISE SPECIFIED		SIZE	DWG No	REV
SEE BOM ABOVE	XXX = .002		D	FC115	1
NATURAL ALUMINUM	X.XXX = .0005				
	ANGLES = .05°		SCALE	NONE	SHT 1 OF 1