

Vantage Next[®]

State-of-the-art video detection that delivers superior performance on a scalable platform

Benefits of the VantageNext system



Includes SmartCycle[®]
Bicycle differentiation provides special timing for cycling safety



Sends streaming video to the traffic management center



Captures traffic data including turning movement counts



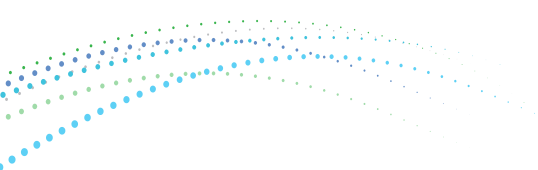
State-of-the-art video detection system

Vantage Next[®] is Iteris' next generation video detection system that capitalizes on the latest technology. Vantage Next uses a powerful processor that enables future functional growth while maintaining proven Iteris video detection performance and reliability. The architecture supports expanding ITS applications and easily integrates with existing and future technologies.

Today's traffic engineers and planners need real-time data to ensure maximum efficiency and effectiveness of traffic management solutions. Vantage Next captures all the data necessary to allow the local traffic controller to manage the intersection remotely while delivering network-wide data back to the traffic management center.

Simple to install and set up

Vantage Next improves the lifecycle cost by simplifying the cabling between the camera and the traffic cabinet and within the cabinet itself. No special tools are required for installation. Exceptional vehicle detection through advanced algorithm design.



Vantage Next®

State-of-the-art video detection that delivers superior performance on a scalable platform

Benefits

- Low lifecycle cost
- Easy to install, configure, and maintain
- CAT5 cable connections
- Simple and convenient access
- Flexible and scalable
- Automatic traffic counting
- FOV set up from the ground

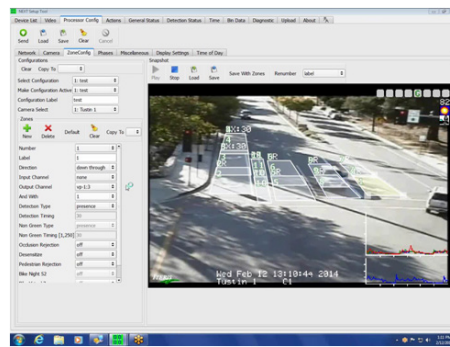
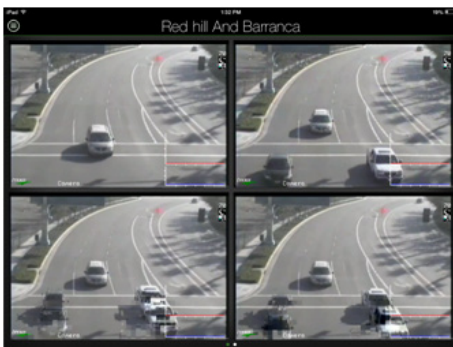
SPECIFICATIONS

Video Processor

Power	12 or 24 VDC, 5W typical
Video Output	Compressed Digital Stream
Detector I/O	4 open-collector outputs and 4 inputs per processor card 128 total outputs /64 total inputs using extension modules
Status Indicators	Primary power Video input status Detection outputs
Communications	Ethernet, DCAM I/F
CCU	
Power	110/220 50/60Hz 20W max.
Communications	Ethernet USB Type A (x2) Wi-Fi SDLC communications
Video Output	MPEG-4 and H.264 Resolution DI/VGA/CIF (720x480 pixels) Adjustable frame rate 5/15/30fps

Camera

Power	48VDC, 5W
Connections	Terminal Block
Communications	DCAM I/F
Environmental	IP-67
General	
Op. Temperature	-35°F to +165°F (-34°C to +74°C)
Humidity	0% to 95% non-condensing
Vibration	0.5G, 3 axes, 5-30Hz
Shock	10G in all 3 axes
Regulatory	NEMA TS-2 compliant FCC part 15, Class A
Warranty	3 years limited warranty



Windows is a registered trademark of Microsoft.
iOS is a registered trademark of Apple.



Copyright © 2017 Iteris, Inc. All rights reserved.

NOTICE: Iteris, Inc. reserves the right to change product specifications without notice. Information furnished is for informational purposes only. This information may not be complete or the latest revision. For the most up-to-date information, please contact Iteris, Inc.