

# Ocean State Signal Co.

27 Thurber Blvd • Smithfield, RI 02917  
 (401) 231-6780 • Fax: (401) 231-4390



## SPECIFICATION SHEET

TITLE: Programmable Signal LED Modules

PART NO.: see below

Operating Temperature: -40°F to 165°F (-40°C to 74°C)

Turn-On/Turn-Off Time: < 75msec

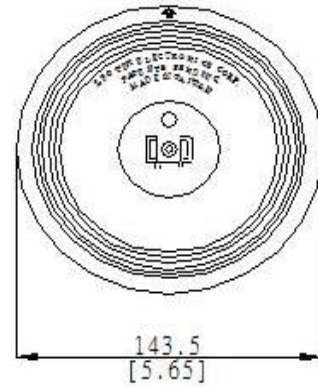
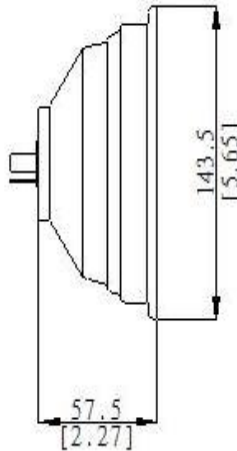
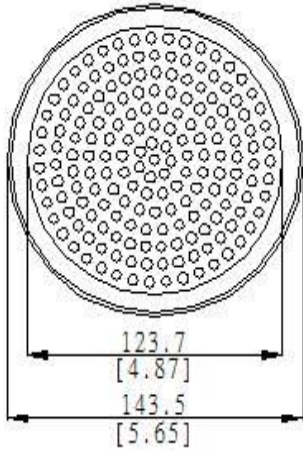
Operating Voltage: 80 - 135Vac

Turn-Off Voltage: > 35Vac

Power Factor: > 0.90

Total Harmonic Distortion (THD): < 20%

## Mechanical Dimensions [in(mm)]



Model Number and Color





Wattage Drawn

Voltage

Dominant Wavelength

Standard

### 5 inch

T05W-A-6100		7	80-135Vac	N/A	N/A
T05R-A-6100		7	80-135Vac	626	Caltrans
T05Y-A-6100		12	80-135Vac	589	Caltrans
T05G-A-CA01		7	80-135Vac	500	Caltrans

**Please note:** Available with clear lens only.

- FCC Compliant for Electrical Noise
- MIL-STD-810F Moisture Resistant
- MIL-STD-883 Mechanical Vibration
- NEMA TS2 Transient Voltage Protection over 2000V

