

Ocean State Signal Co.

27 Thurber Blvd • Smithfield, RI 02917
(401) 231-6780 • Fax: (401) 231-4390



EAGLE
Traffic Control Systems

SPECIFICATION SHEET

TITLE: HAWK SIGNAL - Configuration & Assembly

PART NO.:
HAWK Signal

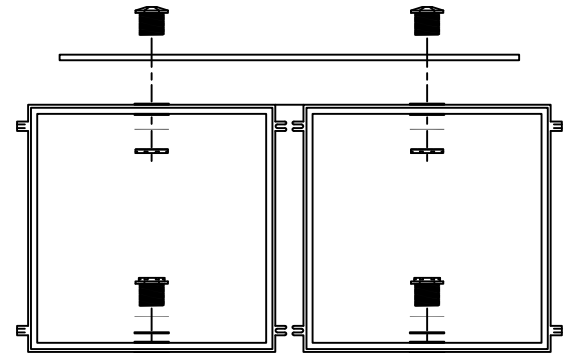
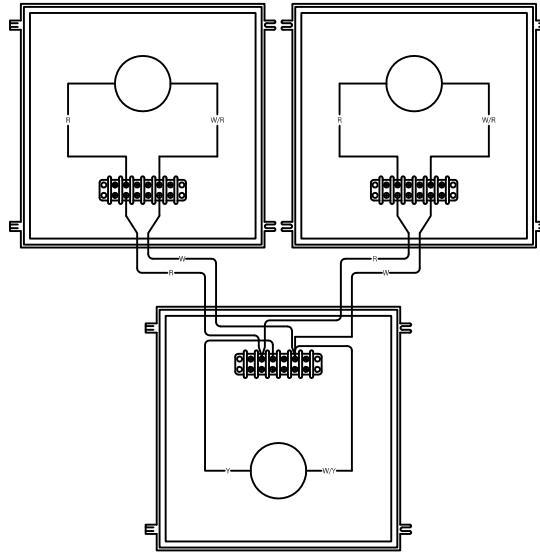
HAWK

Pedestrian Signal

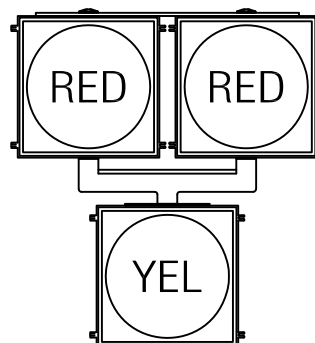
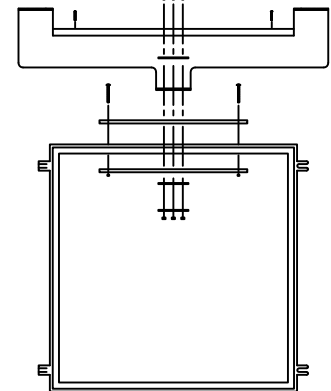


"HAWK" stands for **H**igh-Intensity Activated **C**ross**W**alk. It's a type of pedestrian crossing signal that has proven in several states to increase safety for pedestrians by grabbing the attention of motorists.

While it looks fairly similar to a traditional signalized pedestrian crossing, the HAWK functions a bit differently. When not in use, it will remain dark. The signal goes through a sequence of six movements after a pedestrian pushes the button. The HAWK signal begins flashing yellow to indicate to drivers someone will be using the crosswalk. It then goes to solid yellow like a typical traffic signal, advising drivers to stop if safe to do so. The signal then turns solid red, requiring drivers to stop at the stop line. Finally, the signal goes to flashing red, letting drivers know that after coming to a complete stop, they can proceed with caution if the way is clear - the same movement they would make at any other flashing-red signal. The signal then returns to a dark state.



HAWK SIGNAL
ASSEMBLY



FACE ARRANGEMENT
(WITH LEDs INSTALLED)