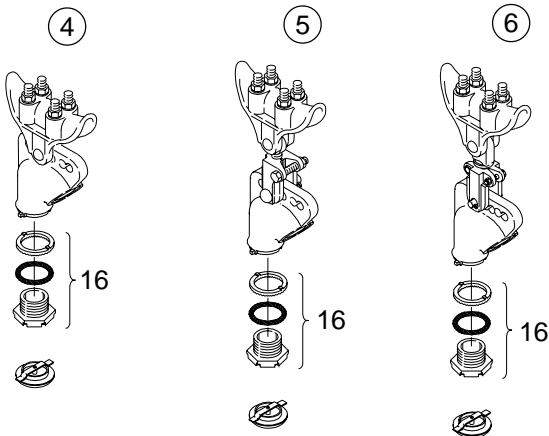
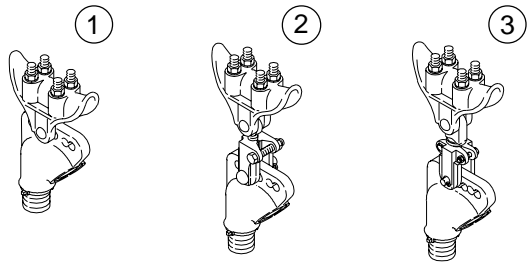


ITEM	DESCRIPTION	PART NO.
SPAN WIRE HANGER ASSY:		
①	Alum.	SE-3019
②	Alum w/ Iron Balance Adjuster	SE-3272
③	Alum w/ PAL Balance Adjuster	SE-3274
④	1-Way, Alum w/ Signal Closure Kit	SE-3043
⑤	1-Way, Alum w/ Iron Balance Adjuster	SE-3033
⑥	1-Way, Alum w/ PAL Balance Adjuster	SE-3276
UPPER & LOWER ARM ASSY:		
⑦	2-Way, 16½" CTC, Alum	SE-3038
⑧	3-Way, 16½" CTC, Alum	SE-3039
⑨	4-Way, 16½" CTC, Alum	SE-3040
UPPER ARM ASSY:		
10	2-Way, 16½" CTC, Alum	SE-3020
11	3-Way, 16½" CTC, Alum	SE-3023
12	4-Way, 16½" CTC, Alum.	SE-3025
LOWER ARM ASSY:		
13	2-Way, 16½" CTC, Alum.	SE-3022
14	3-Way, 16½" CTC, Alum.	SE-3024
15	4-Way, 16½" CTC, Alum.	SE-3026
16	UPPER ASSY KIT, Alum	SE-3042
17	LOWER ASSY KIT, 44"	SE-3021

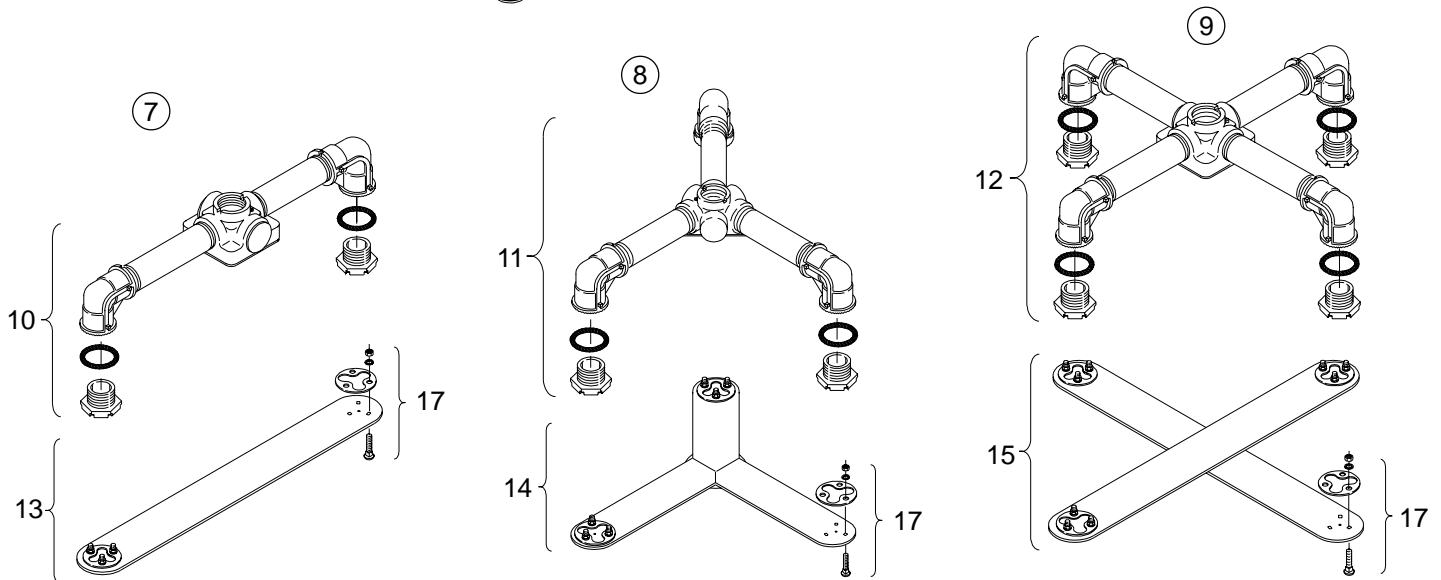


Notes:

- All assemblies are supplied standard with stainless steel fasteners and galvanized hardware on span wire clamps. Stainless upgrade shall include stainless steel hardware on span wire clamps.
- Please specify options when ordering.

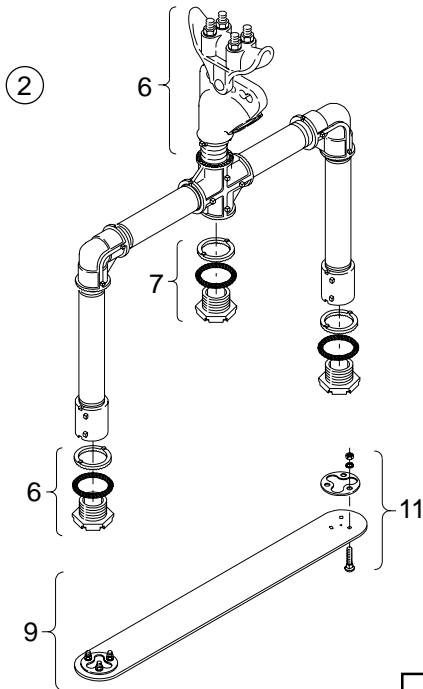
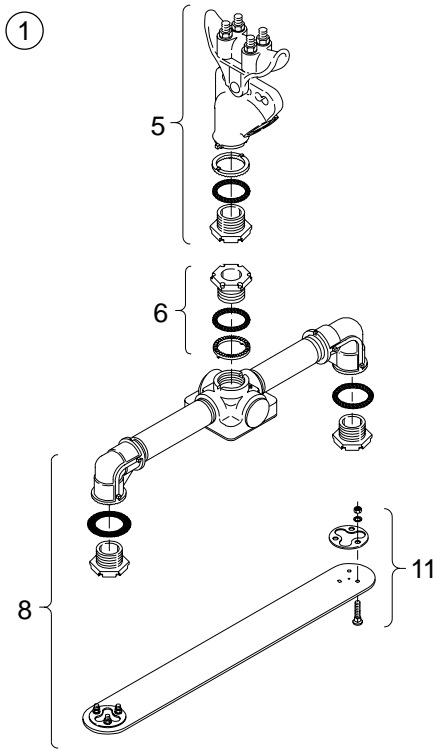
ITEM 1-6 OPTIONS
STAINLESS UPGRADE
PAINT

ITEM 7-9 OPTIONS
PAINT

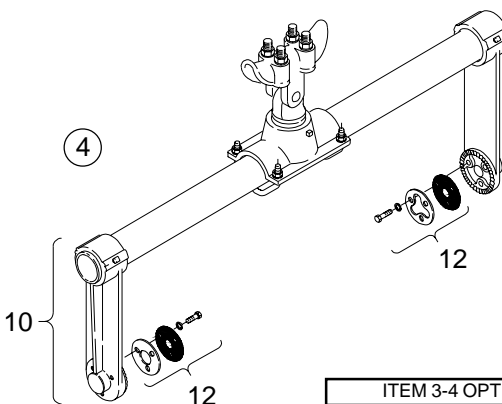
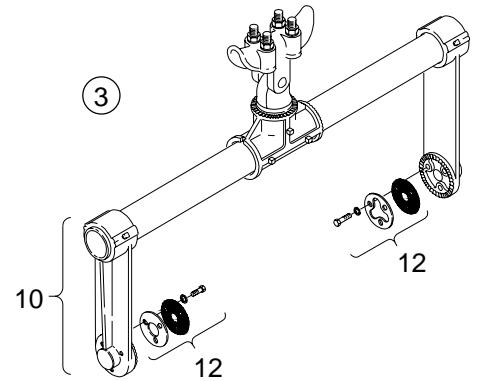


FREE-SWINGING SIGNAL MTGS

Aluminum Span Wire, 1½"



ITEM 1-2 OPTIONS
STAINLESS UPGRADE
PAINT



ITEM 3-4 OPTIONS
SIGNAL SECTION: 2, 3, 4, or 5
STAINLESS UPGRADE
PAINT

ITEM	DESCRIPTION	PART NO.
SPAN WIRE ASSY:		
①	5-Sec Cluster, 16½" CTC, Alum.	SE-3120
②	5-Sec Cluster, 16½" CTC, Alum.	SE-3137
HORIZONTAL SPAN WIRE ASSY:		
③	w/ Slip Tee & Iron Span Wire Clamp, Alum.	AB-0127
④	w/ Tube Saddle & Iron Span Wire Clamp, Alum.	AB-0123
SPAN WIRE HANGER ASSY:		
5	Alum w/ Hex Nipple	SE-3066
6	Alum w/ Allthread Nipple	SE-3019
7	UPPER ASSEMBLY KIT, Alum.	SE-3042
8	UPPER & LOWER ARM, 2-Way, 16½" CTC, Alum	SE-3038
9	LOWER ARM ASSY., 2-Way, 16½" CTC, Steel	SE-3022
10	ARM KIT, Tapped for 3/4" CGB	AB-4001
11	LOWER ASSY KIT, ¼"	SE-3021
12	HARDWARE KIT, CGB Arm, ¼"	AB-0269

Notes:

1. All assemblies are supplied standard with stainless steel fasteners and galvanized hardware on span wire clamps. Stainless upgrade shall include stainless steel hardware on span wire clamps.
2. Please specify options when ordering.