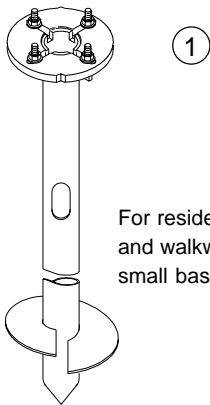




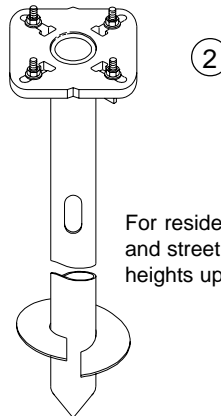
ITEM	DESCRIPTION	PART NO.
①	FOUNDATION ANCHOR ASSEMBLY, 4½" to 6½" Bolt Circle, 1-3/4" x 3" Hand Hole, w/ ½"-13NC Galv Hardware (wt. 43 lbs.)	PB-5369
②	FOUNDATION ANCHOR ASSEMBLY 7-3/4" to 14-3/4" Bolt Circle, 2" x 3" Hand Hole, w/ 3/4"-10NC Galv Hardware (wt. 82 lbs.)	PB-5364
③	MEDIUM FOUNDATION ANCHOR ASSEMBLY 10" to 15" Bolt Circle, 2-3/8" x 12" Hand Hole, w/ 1"-8NC Galv Hardware (wt. 150 lbs.)	PB-5372
	HEAVY DUTY FOUNDATION ANCHOR ASSEMBLY 13" to 18" Bolt Circle, 2-3/8" x 12" Hand Hole, w/ 1¼"-7NC Galv Hardware (wt. 234 lbs.)	PB-5375

Notes:

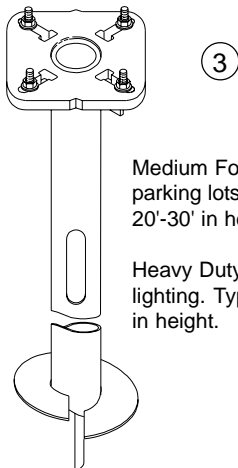
1. All assemblies are supplied standard with galvanized hardware.
2. All assemblies with hardware are bagged in plastic for outdoor storage.



①
For residential, ornamental,
and walkway lighting with
small bases.

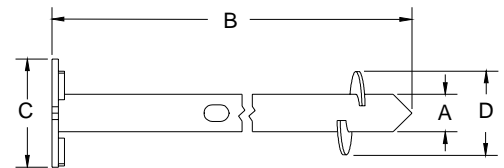


②
For residential lights, parking lots,
and street lights. Typically for pole
heights up to 16'.

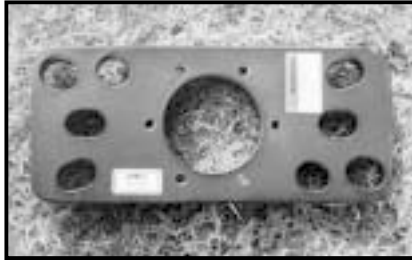


③
Medium Foundation: For residential lights,
parking lots, etc. Typically for poles ranging from
20'-30' in height.

Heavy Duty Foundation: For street and highway
lighting. Typically for poles ranging from 30'-50'
in height.



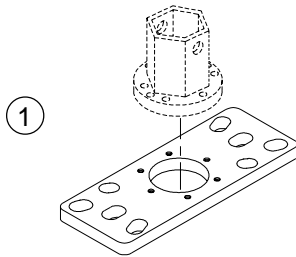
PART NO	A	B	C	D
PB-5369	3½"	48"	7-3/4"	10"
PB-5364	4½"	56"	13"	10"
PB-5372	6-5/8"	60"	15"	13"
PB-7375	8-5/8"	60"	18"	13"



ITEM	DESCRIPTION	PART NO.
①	DRIVER ADAPTER For Foundation Anchor	PB-0604
②	SHIM, Steel, 1/16" x 2" x 2"	PB-0602
	SHIM, Steel, 1/8" x 2" x 2"	PB-0603

Notes:

1. All assemblies are supplied standard with galvanized hardware.
2. All assemblies with hardware are bagged in plastic for outdoor storage.



Required to connect the kelly bar adapter to the foundation anchor for installation. Special hole pattern permits installation of foundation anchors having bolt circle diameters of 9" to 13".

