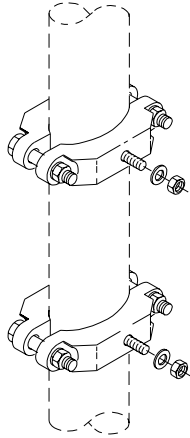


SIGN MOUNTINGS

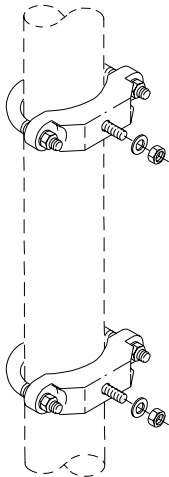
Sign Clamp Assemblies

①

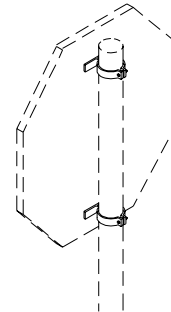


OPTIONS
POLE SIZE: 1½", or 2"
PAINT

②

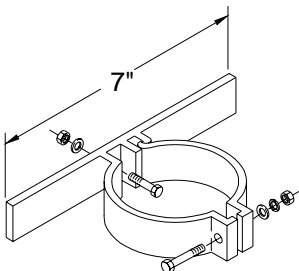


OPTIONS
POLE SIZE: 1½", 2", 2½", or 4"
ORNAMENTAL FRAME MOUNT
PAINT

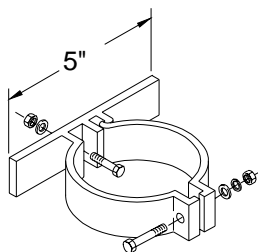


ITEM 3-5 OPTIONS
PAINT

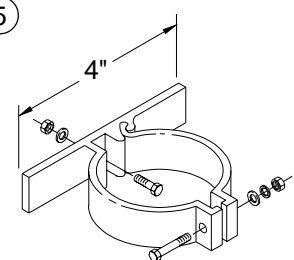
③



④



⑤



ITEM	DESCRIPTION	PART NO.
①	DOUBLE SIGN CLAMP, w/ 5/16" Sign Mtg Hardware.....	SH-0203
②	U-BOLT SIGN CLAMP, w/ 5/16" Sign Mounting Hardware.....	SH-0206
	EXTRUDED SIGN CLAMP:	
③	w/ 5/16" Sign Mtg Hardware for 2½" (2-7/8" O.D.) Pipe.....	SH-0211
④	w/ 5/16" Sign Mtg Hardware for 2½" (2-7/8" O.D.) Pipe.....	SH-0219
⑤	w/ 5/16" Sign Mtg Hardware for 2" (2-3/8" O.D.) Pipe.....	SH-0200

Notes:

1. All assemblies are supplied standard with stainless fasteners and natural aluminum alodine coating.
2. Please specify options when ordering.