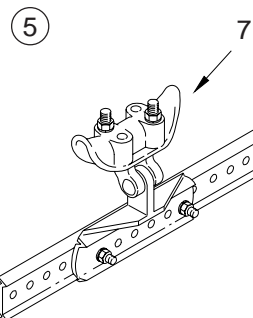


ITEM	DESCRIPTION	PART NO.
SPAN WIRE SIGN HANGER:		
①	w/ Serrated Span Wire Clamp, Alum	SE-5115
②	Adjustable w/ 90° Span Wire Clamp, Alum	SE-5111
FREE-SWINGING SIGN HANGER:		
③	w/ 90° Span Wire Clamp, 16" CTC, Alum	SE-5117
④	w/ 90° Span Wire Clamp, 7-Hole, Alum	SE-5167
5	w/ 90° Span Wire Clamp w/ Extender, Alum	SE-5168
6	SERRATED SPAN WIRE CLAMP, Alum w/ J-Bolts	SE-3213
7	90° SPAN WIRE CLAMP, Alum w/ J-Bolts	SE-3212
8	HARDWARE KIT, Tri-Stud w/o Gasket, 5/16"	SE-5035

Notes:

- All assemblies are supplied standard with stainless fasteners and galvanized hardware on span wire clamp. Stainless upgrade shall include stainless steel hardware on span wire clamps.
- Please specify options when ordering.

ITEM 1-4 OPTIONS
STAINLESS UPGRADE
PAINT

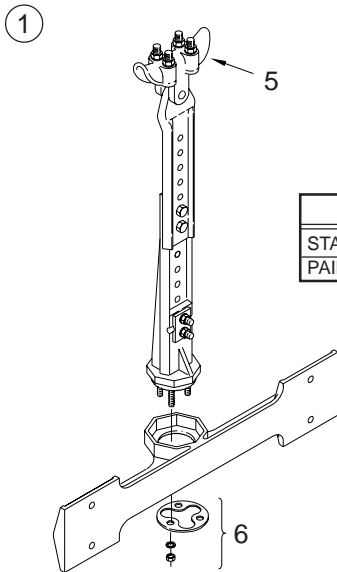


SIGN HOLE CTC	EXTENDER LENGTH
15"	16"
21"	22"
33"	34"

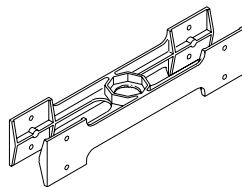
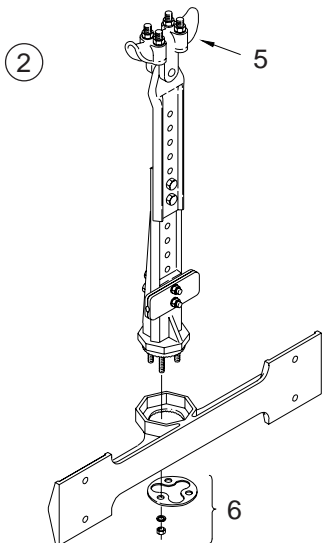
OPTIONS
SIGN HOLE CTC (see chart)
STAINLESS UPGRADE
PAINT

SIGN MOUNTINGS

Sign Hanger Assemblies

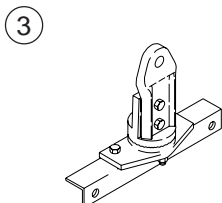


OPTIONS
STAINLESS UPGRADE
PAINT

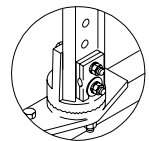
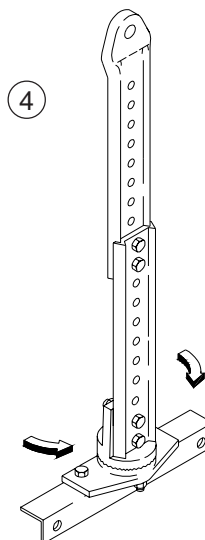


Double Sign Hanger Option

OPTIONS
DOUBLE SIGN HANGER
STAINLESS UPGRADE
PAINT



OPTIONS
CENTER TO CENTER: 13", 19", 25", 31", or 37"
PAINT



Tether Option

SIGN HOLE CTC	ANGLE LENGTH
13"	15"
19"	21"
25"	27"
31"	33"
37"	39"

OPTIONS
SIGN HOLE CTC (see chart)
TETHER
PAINT

ITEM	DESCRIPTION	PART NO.
------	-------------	----------

SPAN WIRE SIGN HANGER:

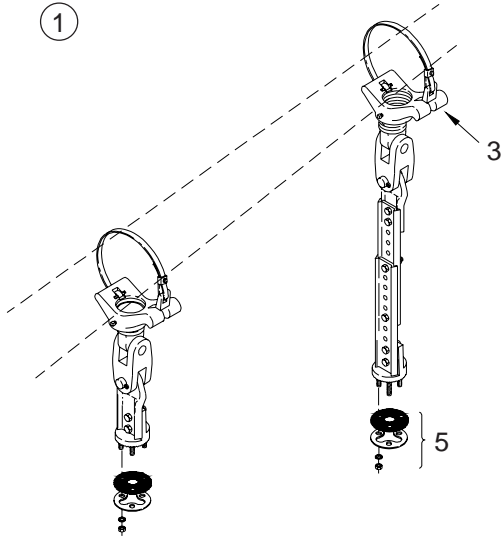
- ① Adjustable, 16" CTC, Alum w/ Tether SE-5116
- ② Adjustable, 16" CTC, Alum w/ Stabilizer Bar SE-5114

SIGN HANGER ASSEMBLY:

- ③ Adjustable w/ Sign Mounting Angle, Alum SE-5043
- ④ Adjustable w/ Sign Mounting Angle, Alum SE-5046
- 5 SPAN WIRE CLAMP, Iron w/ U-Bolts SE-0338
- 6 HARDWARE KIT, Tri-Stud w/o Gasket, 5/16" SE-5035

Notes:

1. All assemblies are supplied standard with stainless fasteners and galvanized hardware on span wire clamp. Stainless upgrade shall include stainless steel hardware on span wire clamps.
2. Please specify options when ordering.

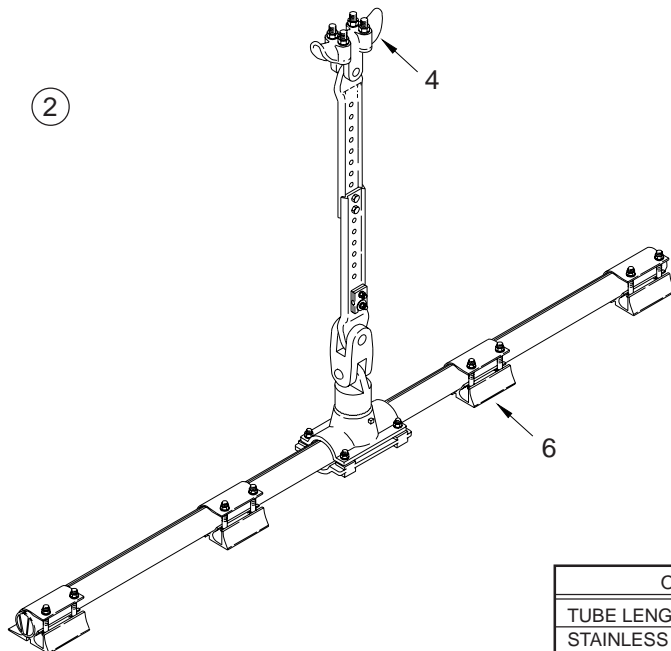


OPTIONS
BAND LENGTH: 29", 36", 42", 48", or 56"
STAINLESS UPGRADE
PAINT

ITEM	DESCRIPTION	PART NO.
①	MAST ARM SIGN BRACKET Free-Swinging w/ Band Mnt Mini-Brac	SE-5015
②	SPAN WIRE SIGN HANGER ASSY., Free-Swinging w/ Tether and Sign Clamps	SE-5098
3	Astro Mini-Brac, Band Mount	AB-0121
4	SPAN WIRE CLAMP, Iron w/ U-Bolts	SE-0338
5	HARDWARE KIT, Tri-Stud w/ Gasket, 5/16"-18	SE-5048
6	SIGN CLAMP, 4" w/ AB-5010 Hdwr Kit	AB-0502

Notes:

1. All assemblies are supplied standard with stainless fasteners and galvanized hardware on span wire clamp. Stainless upgrade shall include stainless steel hardware on span wire clamps or stainless steel clamp screw on mini-brac.
2. Please specify options when ordering.



OPTIONS
TUBE LENGTH: 46", 58", or 74"
STAINLESS UPGRADE
PAINT