



TF: (888) 446-9255
PH: (916) 394-9884
FX: (916) 394-9894
EM: sales@xwalk.com
WEB: www.xwalk.com
Traffic Safety Corporation
3513 La Grande Blvd.
Sacramento, CA 95823-1010

Traffic Safety Corp.
TS600 Fully Flush
Inpavement Warning System

Application

Our TS600 inpavement lights warn motorists that pedestrians are in the crosswalk. They are activated by a pushbutton or automatic sensor at either curb and emit a rapidly flashing yellow (or red) light.

Typical Installation

A two-lane road, 24 feet wide, would have three TS600 fixtures embedded on each side of the crosswalk to alert drivers and silhouette pedestrians. The pedestrian triggers the lights using a push button or by automatic activation. Each fixture projects a beam of light that is clearly visible in daylight and under the worst weather conditions.

Fully Flush Fixture

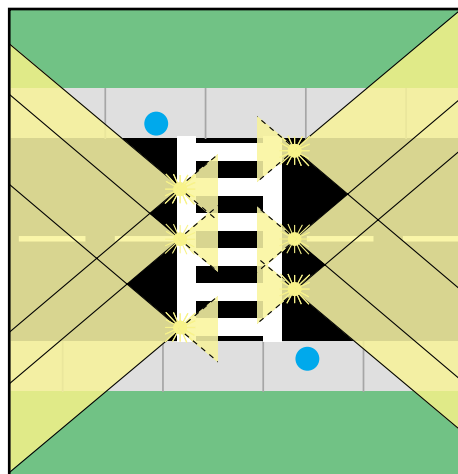
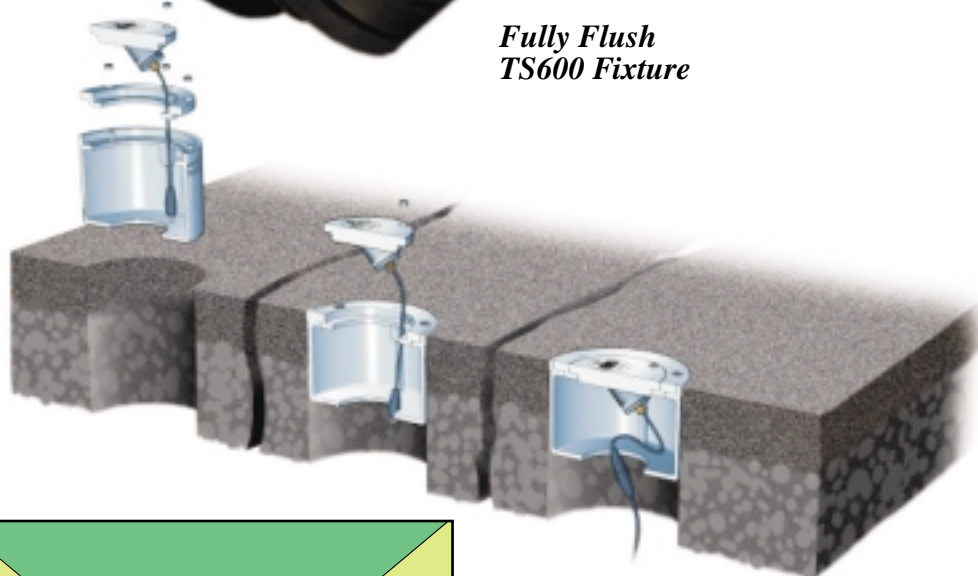
The TS600 mounts flush with the road surface. This reduces damage caused by traffic wear and snowplows. The corrosion resistant cast aluminum body is designed to withstand heavy loads.

Why Our TS600 is Better

- Fully flush fixture has no parts above ground level - ideal for areas with heavy snowplow use.
- No buildup of snow or dirt in front of the lens.
- 200 times brighter than the Caltrans minimum.
- Visible at 200 yards or more - day, night or fog.
- Tough cast aluminum construction is resistant to the weather and traffic wear.
- Easy to install, easy to maintain (cleaning with standard road sweeper).



*Fully Flush
TS600 Fixture*



Six-unit installation: Download complete AutoCAD drawings for 2 and 4 lane applications from www.xwalk.com (unidirectional configuration available).

Additional roadway applications: school zone warning system, railroad crossing warning system, lane control for bridges and tunnels, wrong way warning systems, and toll booths/tollway lead-on lights.

Visit our web site: www.xwalk.com



TF: (888) 446-9255
PH: (916) 394-9884
FX: (916) 394-9894
EM: sales@xwalk.com
WEB: www.xwalk.com
 Traffic Safety Corporation
 3513 La Grande Blvd.
 Sacramento, CA 95823-1010

Traffic Safety Corp.
TS600 Fully Flush
Inpavement Warning System

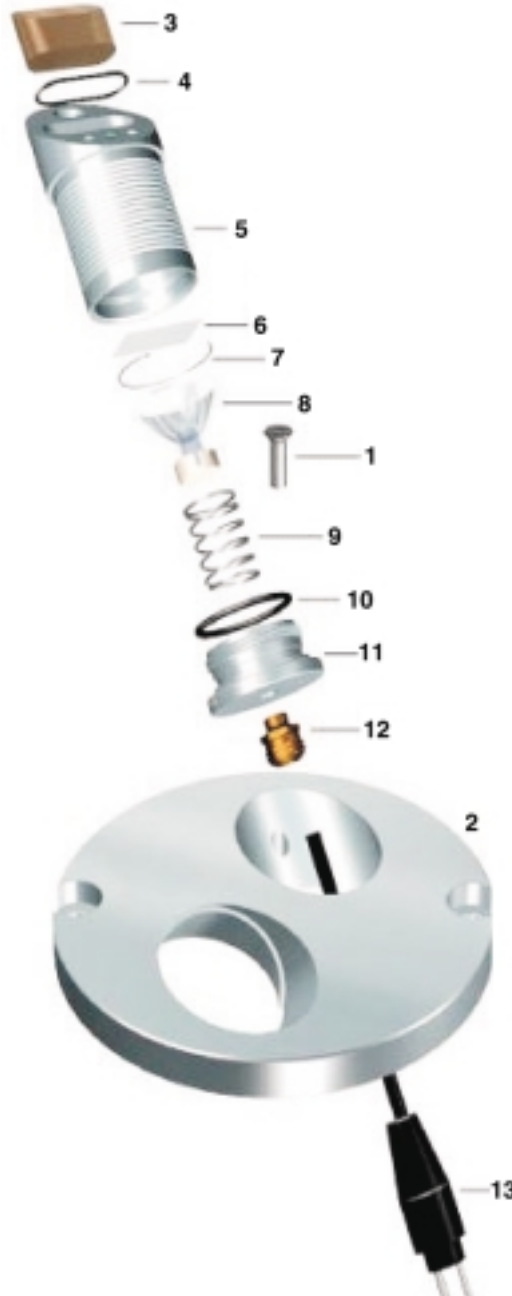
Specifications

- Fixture dimensions: 8" diameter.
- Lamp: 45W halogen or LED.
- Color filter: yellow, red or green.
- Body casting: cast aluminum.
- Base options: one-part regular, two-part regular, one-part snowplow and two-part snowplow.

TS600 Ordering Code

TS600 Y Y 45

Fixture type _____
 Filter color _____
 Y=yellow R=red
 G=green X=blank
 Lamp _____
 45=45W, halogen L1=LED 12V
 L2=LED 120V



Components

Part	Amount	Name
1	2	MBX20 DIN 963 SS
2	1	Flange straight
3	2	Laminated lens
4	2	O-ring R3162
5	2	Lamp holder
6	2	Color filter
7	2	Fixing spring
8	2	Lamp
9	2	Cylinder spring
10	2	O-ring R147
11	2	End closure
12	2	Cable gland
13	2	Plug lead

Visit our web site: www.xwalk.com