

SPECIFICATIONS

This button is a highly vandal resistant button with essentially no moving parts. It is pressure activated, requiring less than 3 lbs push force. When the switch activates, you hear a two tone beep and the LED flashes.

Body Material: Aluminum, Powder Coated

Colors: Black, Green & Yellow

To specify color, add B for black, G for green, or Y for yellow in "X" position in part number.

Button Material: 316 Stainless Steel

Piezo Driven Solid State Switch:

Operating Temperature: -30°F to 140°F (-34°C to 60°C)

Operating Voltage: 15—36V DC or 12—28V AC

On Resistance, 100 Typical.

Operating Life: Greater than 100 million operations.

Operating Standby Current: 10pA typical (equivalent to 2 MO at 20V)

LED:

Operating Mode: Approx. 0.025 sec. flash each time button is pressed.

Luminous Intensity: Greater than 1200 mcd (ultra bright red).

Viewing Angle: 160°C

Beeper:

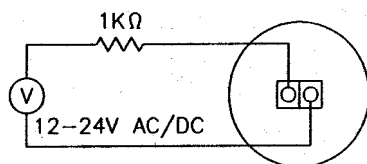
Sounds simultaneously with LED flash.

Different tones for press and release, 2.3 kHz & 2.6 kHz.

Beeper uses power from existing switch wires.

FITS PELCO SE-2039/SE-0267 BODY.

Suggested Test Circuit



INFORMATION ON THIS DOCUMENT IS PROPRIETARY TO POLARA AND SHALL NOT BE USED, COPIED, REPRODUCED OR DISCLOSED IN WHOLE OR IN PART WRHOUT WRITTEN CONSENT OF POLARA.

Preliminary 1 - 01/20/05										
REV.	DATE	LTR	E.C.O. NO.	BY	CKR	ENG	DSN	MFG	QA	FNL

**POLARA ENGINEERING INC.**  
**4115 W. ARTESIA AVE. FULLERTON, CA. 92833**  
 TOLERANCES: .XXX ±005 .XX ±.02 (EXCEPT AS NOTED) SCALE 1:2  
 DRAWN BY CKR. ENG. MGR. MFG. MGR. SHEET 1 OF 1  
 BB  
 DATE 01-20-05 DSN. ENG. Q.A. APP. FINAL APP. USE  
 TITLE OVAL BULLDOG WITH MOMENTARY LED DWG. NO. OBDLM2—X