

SA Polycarbonate Pedestrian Signal Bulletin 1170

Features

Meets or exceeds ITE specifications.
Design provides minimum weight but maximum rigidity and strength.

MATERIAL -- The housing, door and reflector holder/door are injection molded of ultraviolet stabilized, pre-colored opaque polycarbonate.

HOUSING -- One piece polycarbonate unit with serrations in 5° increments at each end. Each housing has provisions for mounting two terminal blocks. Housings may be fastened together to make multi-section signals.

VISOR -- Removable extruded ABS - available in tunnel or cutaway style.

LENS -- Polycarbonate lens with completely opaque background.

REFLECTOR -- Aluminum reflector treated with specular ALZAK® finish.

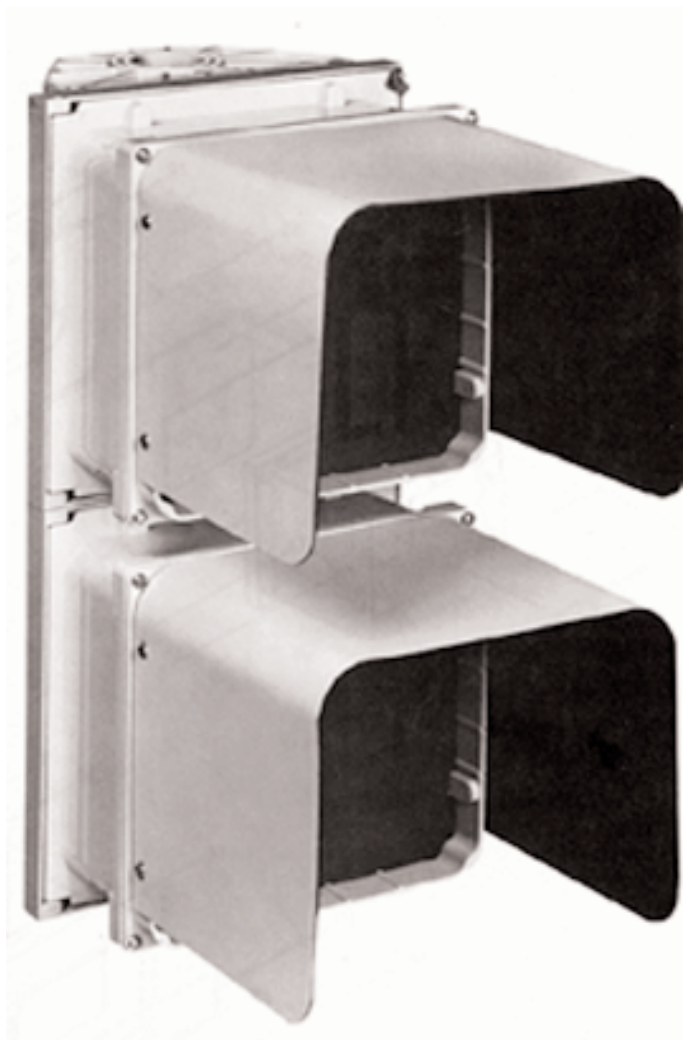
REFLECTOR HOLDER/DOOR -- Deep-base polycarbonate reflector housing gasketed to provide completely dust free unit.

LAMP SOCKET -- Gasketed, prefocused, and may be rotated for positioning the lamp filament without using tools.

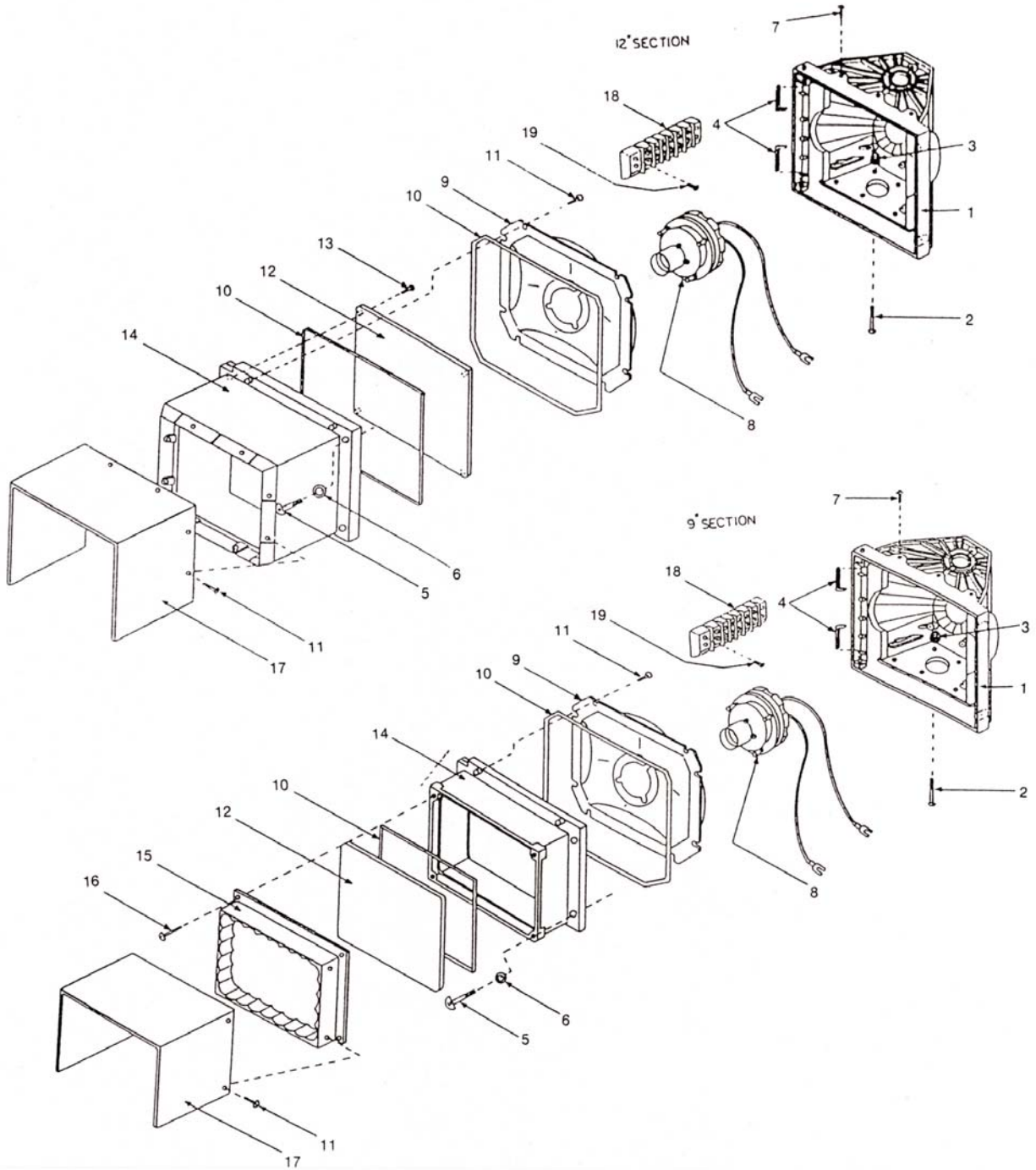
POSITIVE POSITIONING -- Molded serrations provide positive locking of sections or complete signal in any 5° increment about the vertical axis.

HINGES -- Enclosed hinges provide a modern appearance - all hardware is stainless steel.

MOUNTING -- Completely compatible with all standard signal hardware.



**PEDESTRIAN SIGNALS
(SA POLYCARBONATE)**



**replacement
parts
9" (225MM) &
12" (300mm)
pedestrian signals**

Ref. No.	Description	Part Number	
		9" (225mm)	12" (300mm)
1	Signal housing, green	KB6215	KB6415
	Signal housing, yellow	KB6214	KB6414
	Signal housing, black	KB6216	KB6416
2	Screw (10 - 24 hex screw)	0141716	0141716
3	Flange nut	0150715	0150715
4	Hinge pin	K1196	K1196
5	Thumbscrew, SS	0141212	0141212
6	Thumbscrew washer	0155924	0155924
7	Hole plug	PHP16	PHP16
8	Socket assy. w/spade lugs, red	KB360211	KB360211
	Socket assy. w/spade lugs, green	KB360213	KB360213
9	Reflector	PBR28	PBR27
10	Reflector gasket, lens gasket	PBG71	PBG71
11	Reflector screw, visor screw	0133029	0133029
12	Lens, poly - Portland Orange (Don't Walk)	K1305	K1345
	Lens, poly - Lunar White (Walk)	K1304	K1344
	Lens, poly - Portland Orange (ITE Hand)	K1421	K1423
	Lens, poly - Lunar White (ITE Man)	K1420	K1422
	Lens, poly - Portland Orange (Canadian Hand)	Z59868	K1430
	Lens, poly - Lunar White (Canadian Man)	Z59869	K1431
13	Lens screw, SS	N/A	0135014
14	Signal door, green	KB5216	PDM526
	Signal door, yellow	KB2515	KB5415
	Signal door, black	KB5217	PDM505
15	Holder, green	PDM529	N/A
	Holder, yellow	PDM530	N/A
	Holder, black	PDM528	N/A
16	Holder screw	0117112	N/A
17	Visor, cutaway - green	K1381	K1385
	Visor, cutaway - yellow	K1380	K1384
	Visor, cutaway - black	PDM556	PDM557
	Visor, tunnel - green	K1389	K1393
	Visor, tunnel - yellow	K1388	K1392
	Visor, tunnel - black	PDM537	PDM538
18	Terminal block	PCT100	PCT100
19	Terminal block screw, SS	0135013	0135013

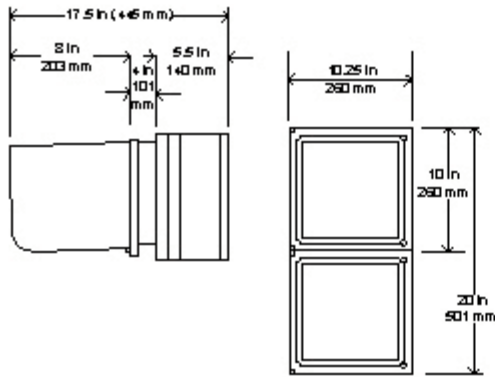
Designed to be virtually maintenance free, the polycarbonate signal's body, door, visor, and lens are manufactured from color impregnated materials. Peeling and corrosion are eliminated and scratches diminished.

EAGLE's signals meet or exceed ITE specifications. EAGLE's hardware or other industry standard hardware may be utilized for mounting.

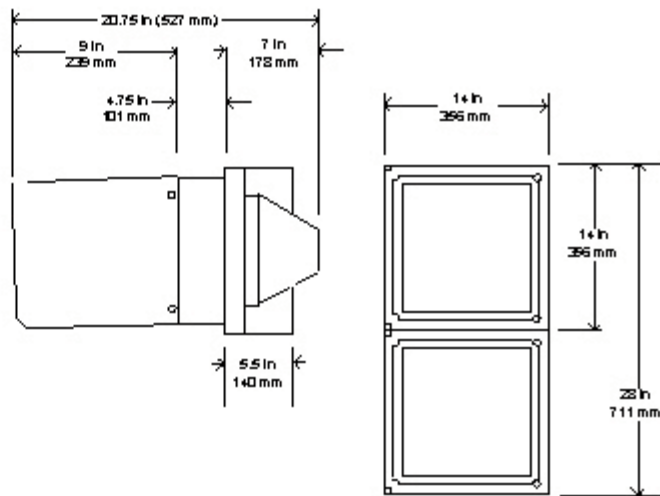
All legends are clearly visible and definable for any width street with ample safety factor.

Letters are 3" (76.2 mm) high with 3/8" (9.5 mm) stroke for 9" (229 mm) signals and 4 1/2" (114 mm) high with 7/16" (11 mm) stroke for 12" (300 mm) signals.

8 in. (200mm) PED SIGNALS DIMENSIONS



12 in. (300mm) PED SIGNALS DIMENSIONS



Weights	9" (225 mm)	12" (300 mm)
Single section with visor (approx.)	5 lbs. (2.27 kg)	7 lbs. (3.2 kg)
Housing	1 lbs. 6.3 oz. (.63 kg)	2 lbs. 5.2 oz. (1.05 kg)
Door	7.5 oz. (.21 kg)	15.1 oz. (.43 kg)