

SIG Polycarbonate Vehicle Traffic Signal Bulletin 1150

Features

Meets or exceeds ITE specifications.
Design provides minimum weight but maximum rigidity and strength.

MATERIAL -- Housing, door, and visor are injection molded of 0.156" thick ultraviolet stabilized, pre-colored opaque polycarbonate - no peeling, no corrosion, and scratches will not show.

HOUSING -- One-piece unit has serrations in 5° increments at each end. Each housing has provisions for mounting two terminal blocks and attaching backplates. Housings may be fastened together to make multi-section signals. The 8" and 12" housings can be intermixed to form combination signals.

DOOR -- Two stainless steel captive eyebolts and wing nuts permit easy access to the inside of the housing. Hinge pins are stainless steel.

VISOR -- The removable twist-on visor is secured to the door with stainless steel hardware. Cut-away and tunnel visors are available.

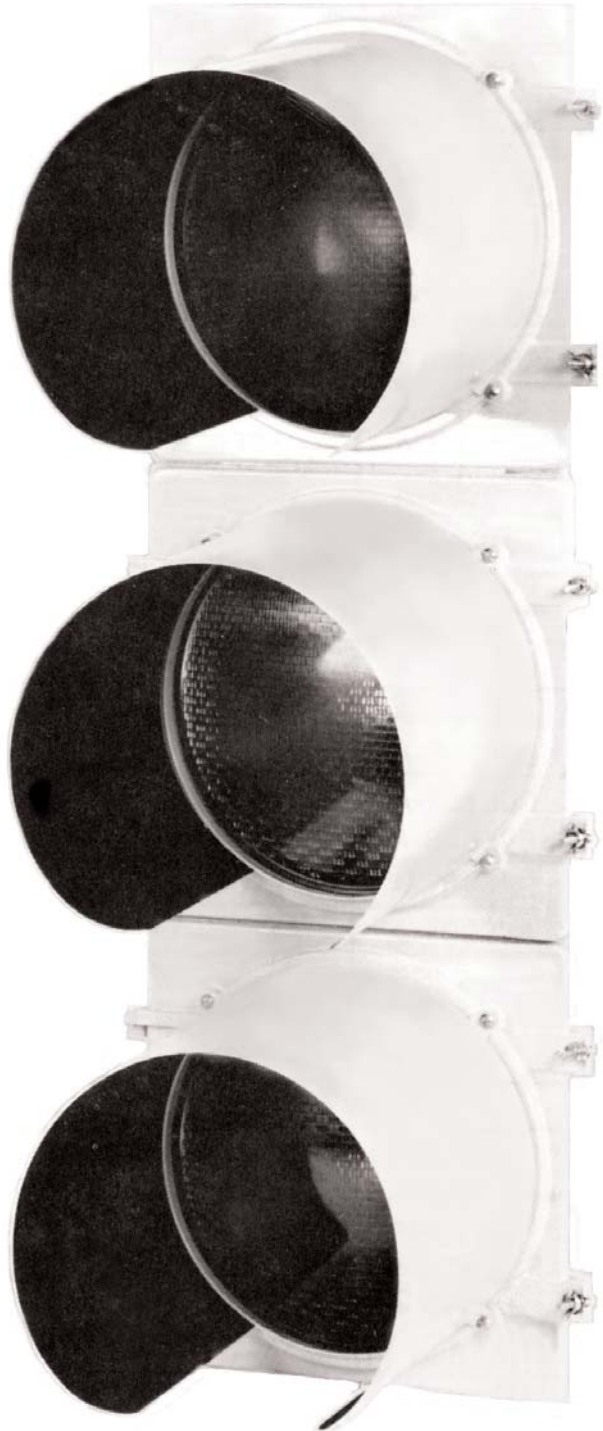
REFLECTOR -- A separately hinged, ALZAK® reflector is standard. Glass is also available.

LENS -- Conforms to ITE specifications. The standard lens is polycarbonate capable of withstanding illumination by a standard traffic signal lamp without physical distortion. A glass lens is also available.

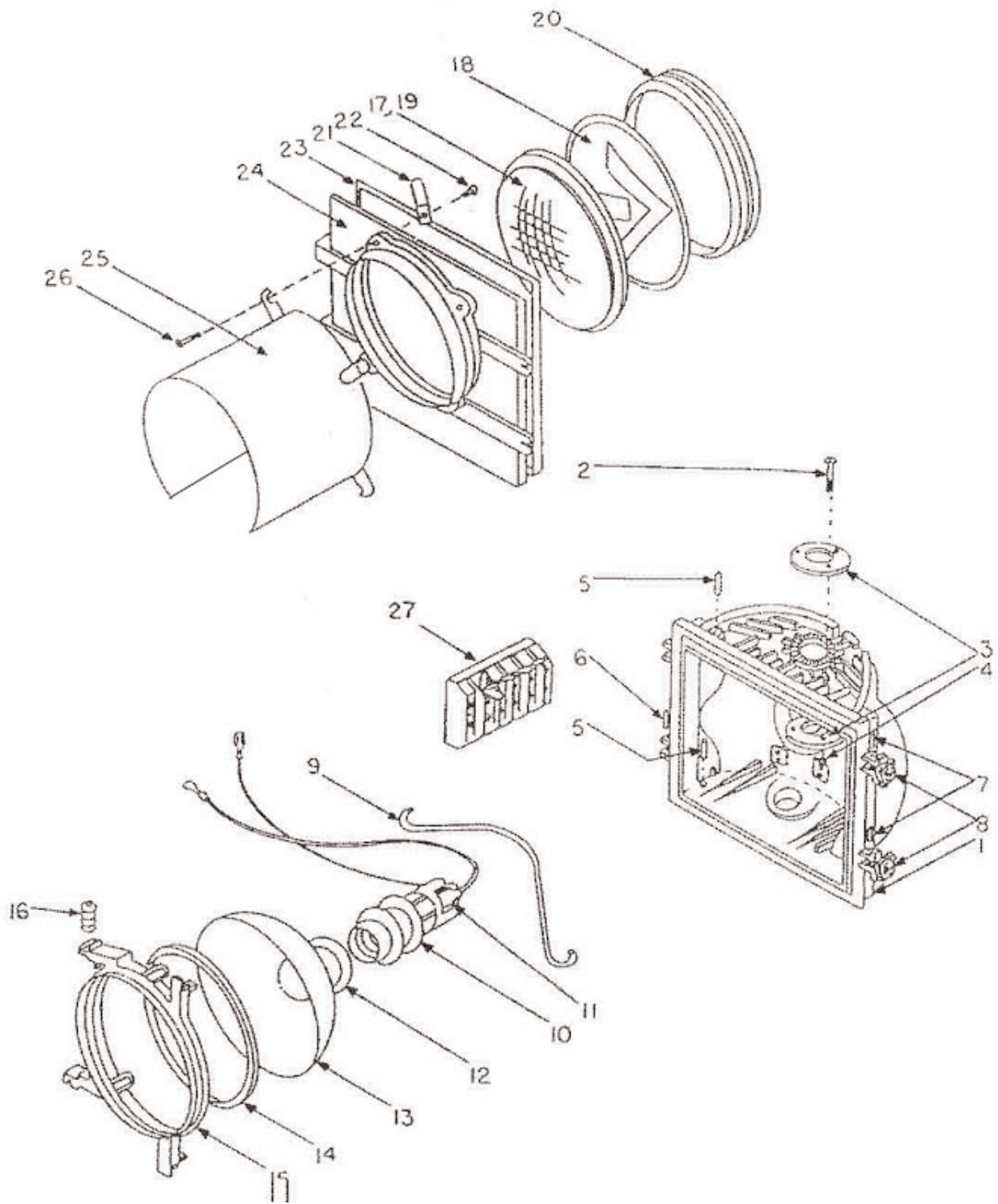
GASKETS -- A molded one piece lens gasket is used to seal the lens to the reflector assembly and door to form a sealed unit. A second gasket between the door and the housing assures the weather tight quality of the unit.

LAMP SOCKET -- Insulated, pre-focused, and may be rotated for positioning the lamp filament without using tools.

POSITIVE POSITIONING -- Positive positioning and locking is achieved through the use of serrated brackets, mast arm, or span wire fittings.



VEHICLE SIGNALS
(SIG POLYCARBONATE)



**replacement
parts
8" (200mm) &
12" (300mm)
traffic signals**

Ref. No.	Description	Part Number	
		8" (200mm)	12" (300mm)
1	Signal Housing	A700227 XX	A700229 XX
2	Carriage bolt (1/4 - 20 x 1 3/4")	A701101	A701101
3	Clamping washer	A844258	A844258
4	Hex nut (1/4 - 20)	A143416	A143416
5	Type 2 grove pin, SS (8" - 3/16 x 1")	A844030	N/A
	Type 2 grove pin, SS (12" - 3/16 x 1 3/16")	N/A	A702181
6	Hinge pin (flared spiral pin)	A701392	A701392
7	Spiral pin, SS (3/16" x 1")	A144006	A144006
8	Wingnut eyebolt assy.	A844263	A844263
9	Socket holder wire (bail)	A701862	A844335
	Bail wire spring	A844337	A844337
10	Socket with brass screw shell	A702029	A702029
11	Lead assy. w/spade lugs, red	A844252	A844252
	Lead assy. w/spade lugs, yellow	A844251	A844251
	Lead assy. w/spade lugs, green	A844250	A844250
12	Socket gasket	A844249	A844249
13	Reflector (glass)	A844244	A844324
	Reflector (alzak)	A844245	A844325
14	Reflector gasket, glass	A701299	A701300
	Reflector gasket, alzak	A844246	A844326
15	Die-cast reflector ring	A702159	A702158
16	Reflector ring spring	A702182	A702274
17	Lens, poly - red	PBL240	PBL246
	Lens, poly - yellow	PBL241	PBL248
	Lens, poly - green	PBL239	PBL247
18	Lens, arrow mask	N/A	PBL286
19	Lens, glass - red	PBL3	PBL125
	Lens, glass - yellow	PBL2	PBL124
	Lens, glass - green	PBL1	PBL123
	Lens, glass - red arrow	A844041	PBL234
	Lens, glass - yellow arrow	A844043	PBL233
	Lens, glass - green arrow	PBL114	PBL87
20	Lens gasket	A844248	A844328
21	Lens clip	A700509	A700509
22	Lens clip screw, SS (10 - x 3/8")	0135021	0135021
23	Door gasket	A701630	A701630

Ref. No.	Description	Part Number	
		8" (200 mm)	12" (300 mm)
24	Signal Door	A700228 XX	A700230 XX
25	Visor -- tunnel Visor -- cap	A700119 XX A700468 XX	A700120 XX A700469 XX
26	Visor Screw (10 - 32 x 3/8")	0135021	0135021
27*	Terminal block, 4 pos. spade type	A182944	A182944

NOTE: HOUSING & DOOR COLOR | VISOR COLOR

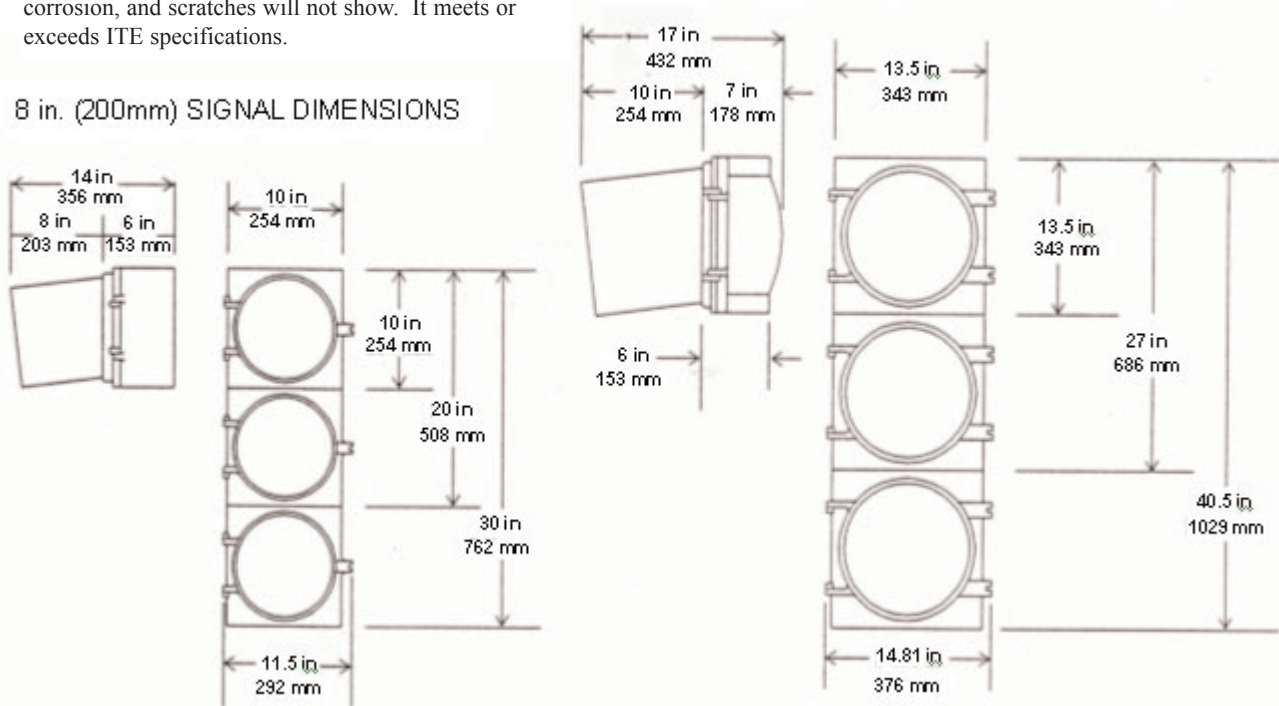
<u>-X</u>	<u>Color</u>	<u>-X</u>	<u>Color</u>
01	Green	03	Black
02	Yellow	04	Yellow
03	Black	05	Green

* Terminal blocks - A four position spade type terminal block standard. A four position kiptite and a six position spade type are options.

The standard signal is composed of three injection molded polycarbonate body sections containing the optical unit, lens, door, and visor. The basic construction design provides minimum weight combined with the maximum rigidity and strength. Coloring is molded in all the way through, therefore, there is no peeling, no corrosion, and scratches will not show. It meets or exceeds ITE specifications.

12 in. (300 mm) SIGNAL DIMENSIONS

8 in. (200mm) SIGNAL DIMENSIONS



Weights	8" (200 mm)	12" (300 mm)
Single section with visor (approx.)	5 lbs. (2.27 kg)	8 lbs. (3.63 kg)
Housing	2 lbs. 0.4 oz. (.92 kg)	3 lbs. 0.1 oz. (1.37 kg)
Door	10.2 oz. (.29 kg)	1 lb. 1.7 oz. (.50 kg)
Ring	3.5 oz. (.10 kg)	6.6 oz. (.19 kg)