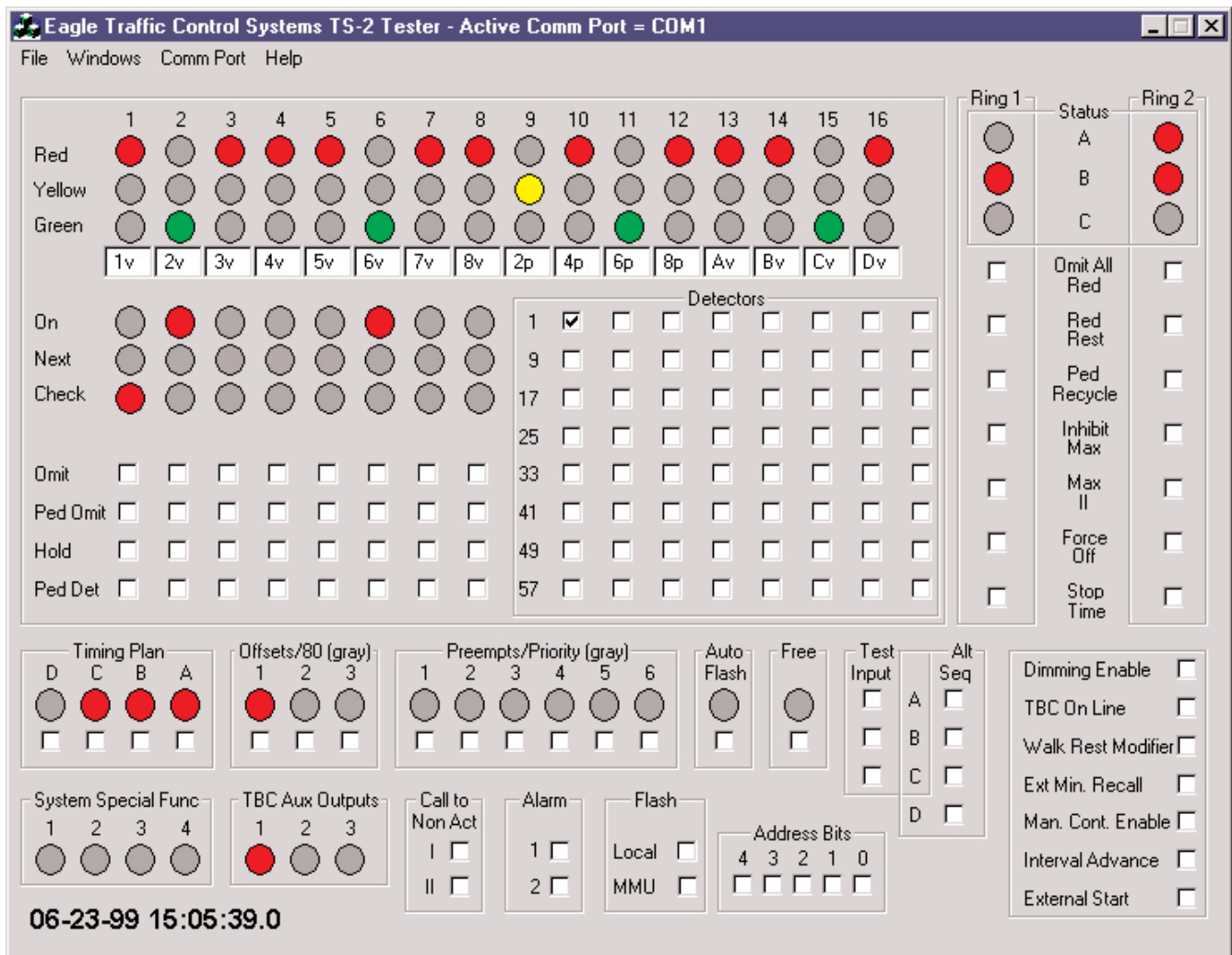




# EAGLE NEMA TS-2 TESTER

EAGLE NEMA TS-2 tester allows complete testing of TS2 controllers without a wired cabinet. The tester consists of two main parts: the Box and the Window-driven (GUI) PC Software. The Box listens for messages from the controller and sends the received data, 10 times per second, to the PC Software for GUI update. The Software configures responses to the messages and returns appropriate information to the controller via the Box.



### ***TS-2 Tester Features include -***

6 check boxes available to **select either preempt or low-priority routines**. In the low-priority setting the bit sent to the controller will change state approximately every 100 milliseconds (~5Hz).

3 check boxes available to **select offsets**, either constant on or a repeating cycle of 77 seconds on and 3 seconds off.

**Spares Dialog check boxes** and red lights allowing the user to set and view any "Spare" bits in messages for TF BIUs #2 and #4.

**Active support, with live data**, controller message types 0, 1, 3, 9, 10, 11, 12, 13, 18, 20, 21, 22, 23, 24, 25, 26 and 27.

**Check boxes in GUI** to control the inputs to the controller, and lights to display the outputs from the controller.

**User-specified MMU programming data** on a GUI designed to look like an MMU programming card, with check boxes to allow input of the appropriate programming for the controller to be tested. This data may be saved to and restored from MMU data files. A default file is provided.

An **associated edit box** with each channel for set-up of "user meaningful" labels. The labels can be stored in label files, one for each configuration desired. A default label file is provided.

**Displayed date and time**, as broadcast once per second by the controller in message type 9. Date and time updates indicate valid communications from the controller through the Box to the PC.

4 status lights allow the user to **monitor the Box's message input and output**, a 5th light indicates receipt of an unknown message from either the controller or the PC.

### ***PC requirements -***

Available COM port (with a male DB-9 connector) capable of running at 57,600 baud. The COM port may be 1, 2, 3, or 4.

MS Windows NT software.

***TS-2 Tester Part Number: AAD14219P001\* (Plastic case)  
AAD14219P002\* (Metal case)***

*\*Includes cables for communications with the controller (EIA-485) and the PC (EIA-232), and an AC adaptor.*